

Certificate Reference: 10938453

1 DETAILS OF THE CLIENT

Client: XXXX
Address: XXXX


2 DETAILS OF THE FIRE DETECTION AND ALARM SYSTEM

Installation Address: XXX
Details of the system: Menvier MF9200 1 Zone Conventional Fire Detection System Over One Floors, Consisting Of x5 Manual Call Points + x7 Automatic Detectors + x3 Bells

3 EXTENT OF THE INSTALLATION AND LIMITATIONS OF THE INSPECTION AND SERVICING

Extent of the fire detection and alarm system covered by this report:
All Control Indicating Equipment, Accessible Cabling, Manual Call Points, Accessible Automatic Detectors + Sounders/Bells
Agreed and operational limitations of the inspection and servicing (include reasons and person agreed with):
None

4 CERTIFICATION OF INSPECTION AND SERVICING

I/we being the competent person(s) responsible (as indicated by my/our signatures below) for the servicing of the fire detection and fire alarm system, particulars of which are set out below, CERTIFY that the said work for which I/we have been responsible complies to the best of my/our knowledge and belief with the recommendations of Clause 45 of BS 5839-1:2017 quarterly inspection of vented batteries/periodic inspection and test/inspection and test over a 12 month period (delete as applicable), except for the variations, if any, stated in this certificate.
Variations from the recommendations of Clause 45 of BS 5839-1:2017 for periodic or annual inspection and test (as applicable):
None
The extent of liability of the signatory is limited to the system described above.
For the INSPECTION and SERVICING of the system:
Name: Jason Taylor Position: Qualified Supervisor Signature:  Date: 17/04/2019

5 DETAILS OF THE ELECTRICAL CONTRACTOR

Trading Title: Taylor Electrical Contractors of Yarm LTD
Address: 12 Harker Close Yarm
Registration Number (if applicable): 041686
Telephone Number: 07967470934
Post code: TS15 9TT


6 SUMMARY OF THE INSPECTION AND SERVICING

See page 3 for a summary of the general condition of the fire detection and alarm system.
Overall assessment of the inspection and servicing in terms of it's suitability for continued use*: **UNSATISFACTORY**
* An unsatisfactory assessment indicates that dangerous (Code C1) and/or potentially dangerous (Code C2) conditions have been identified.

7 OBSERVATIONS AND RECOMMENDATIONS FOR ACTIONS TO BE TAKEN

Referring to the attached Schedule(s) of Inspections and Test Results, and subject to the limitations specified on page 1 of this report under 'Extent of the Installation and Limitations of Inspection and Testing':

N/A There are no items adversely affecting operational performance of the fire detection and alarm system
or

✓ The following observations and recommendations are made

Item No	Observations	Classification Code
1	No Call Point Covers	C3
2	System Operating Instructions Not Available	C3
3	No Set Time or Day For Weekly Testing	C3
4	Detectors Do Not Have CE Marks/Numbers	C3
5	No VADs in Sanitary Facilities	C2
6	Detectors Not Correctly Positioned - See Schedule	C2
7	A Number OF Detectors >10Yrs Old Or Have No Date On Them	C3
8	Sound Levels Do Not Meet Minimum Requirements	C2
9	No Special Key Isolation	C3
10	Not Connected to ARC	C3
11	Internal Sounder Damaged	C2
12	No Earth Connections or Monitoring At CIE (Fire Panel)	C3
13	Detection Cables Not Fire Resistive	C2
14	Coverage In Detector 6 Area Insufficient	C2
15	Various Detectors Obstructed - See Schedule	C2
16	Unable To Access Roof Void To Verify Detection	FI
17	Various Call Points Obstructed - See Schedule	C2
18	Various Call Points Wrong Side Of Door	C3
19	Various Heat Detectors >150mm From Apex	C2
20	Light Fittings <200mm From Various Detectors - See Schedule	C3
21	Call Point 5 >1500mm From Finished Floor Level	C3
22	Unable To Locate End Of Line For Bell 2 Circuit	FI
23	New Room (Old Gift Shop) On Different Alarm System Thats Not Linked	C2
24	Most Coverage Is Heat Detection	C3

One of the following codes, as appropriate, has been allocated to each of the observations made above to indicate to the person(s) responsible for the installation the degree of urgency for remedial action:

C1 Danger Present
Risk of injury. Immediate
remedial action required

C2 Potentially dangerous
Urgent remedial action
required

C3 Improvement
recommended

FI Further investigation
required without delay

Immediate remedial action required for items:

N/A

Urgent remedial action required for items:

5, 6, 8, 11, 13, 14, 15, 17, 19, 23

Improvement recommended for items:

1, 2, 3, 4, 7, 9, 10, 12, 18, 20, 21, 24

Further investigation required for items:

16, 22

8 SUMMARY OF THE INSPECTION AND SERVICING

Where the overall assessment of the suitability of the fire detection and alarm system for continued use on page 1 is stated as 'UNSATISFACTORY', I/We recommend that any observations classified as 'Code 1 - Danger Present' or 'Code 2 - Potentially dangerous' are acted upon as a matter of urgency. Investigation without delay is recommended for observations identified as 'Further Investigation Required'. Observations classified as 'Code 3 - Improvement recommended' should be given due consideration.

General condition of the fire detection and alarm system:

Significant Improvements Required

Date(s) of the inspection and servicing: 17/04/2019

- Outstanding defects reported to responsible person
- Relevant details of the work carried out and faults identified have been entered in the system log book

During the past 12 months: 0 false alarms have occurred.

This number of false alarms equates to false alarms per 100 automatic fire detectors per annum: 0
(for Category M systems enter 'Not Applicable').

9 NEXT INSPECTION AND SERVICING

Based upon risk assessment, taking into account the type of system and the environment, I/We recommend that this installation is further inspected and serviced after an interval of not more than:

6 Months (Enter interval in terms of years, months or weeks, as appropriate)

provided that any items in section 7 which have been attributed a Classification code C1 (danger present) are remedied immediately and that any items which have been attributed a code C2 (potentially dangerous) or require further investigation are remedied or investigated respectively as a matter of urgency. Items which have been attributed a Classification code C3 should be improved as soon as practicable (see section 7).

10 RELATED REFERENCE DOCUMENTS

Related reference documents and certificate numbers:
10938318 - 24/10/18

11 QUARTERLY INSPECTION OF VENTED BATTERIES

- N/A Batteries checked N/A Electrolyte levels checked and topped up as necessary
- N/A Battery connections checked

12 SCHEDULE OF ITEMS INSPECTED

Premises	Note that structural or occupancy changes may have affected compliance with BS 5839-1:2017.
<input checked="" type="checkbox"/> Manual call points suitably sited	<input checked="" type="checkbox"/> No partitions within 500 mm horizontally of any automatic fire detector (Clause 22.3g)
<input checked="" type="checkbox"/> Manual call points are unobstructed	<input checked="" type="checkbox"/> No storage within 300 mm of ceilings (Clause 22.3i)
<input checked="" type="checkbox"/> Manual call points are conspicuous	<input checked="" type="checkbox"/> Clear space of 500 mm exists below each automatic fire detector (Clause 22.3n)
<input checked="" type="checkbox"/> All exits, including any new exits, have manual call points	<input checked="" type="checkbox"/> Each automatic fire detector's ability to receive the stimulus it is designed to detect has not been impeded by any other means
<input checked="" type="checkbox"/> Automatic fire detectors suitable for building use or occupancy	<input checked="" type="checkbox"/> Building use or occupancy does not make existing types of automatic fire detector unsuitable for detection of fire or prone to unwanted alarms
<input checked="" type="checkbox"/> Automatic fire detectors suitably sited	<input checked="" type="checkbox"/> Additional fire detection and alarm equipment provided in any extensions or alterations to the building
<input checked="" type="checkbox"/> Fire alarm devices suitably sited	
Documentation	
<input checked="" type="checkbox"/> System log book examined	<input checked="" type="checkbox"/> Any faults recorded have been attended to
False Alarms	
<input checked="" type="checkbox"/> Record of false alarms checked in accordance with Clause 30.2i	<input checked="" type="checkbox"/> Rate of false alarms during the previous 12 months recorded (Clause 30.2i)
<input checked="" type="checkbox"/> Action taken in respect to false alarms complies with the recommendations of Clause 30.2j:	
No Recorded False Alarms	

13 SCHEDULE OF ITEMS TESTED

✓	Fire alarm functions of CIE checked by operation of at least one detector or manual call point in each circuit and entry made in log book indicating which initiating devices used for these tests	N/A	Radio systems serviced in accordance with manufacturer's recommendations
✓	Operation of fire alarm devices	✓	For other equipment, manufacturer's checks and tests performed
✓	Controls and visual indicators at CIE checked for correct operation	N/A	Printers checked for correct operation
N/A	Ancillary functions of CIE tested	N/A	Printers checked that characters are legible
✓	For CIE, manufacturer's checks and tests performed	N/A	Print consumables available in sufficient quantity to ensure operation until next service visit
✓	Fault indicators and their circuits checked by simulation of fault conditions	✓	Standby battery disconnected and full load alarm simulated
N/A	Automatic transmission of alarm signal to receiving centre	N/A	Specific gravity of each cell of vented batteries checked
N/A	Automatic transmission of other signals, such as fault signals, to receiving centre	✓	Mains disconnected and batteries momentarily load tested (other than those within devices such as manual call points, detectors and fire alarm sounders of a radio linked system)

14 ARRANGEMENTS IN PLACE FOR REPAIR OF FAULTS OR DAMAGE

✓	Emergency call out arrangement in place where maintenance carried out by a third party	✓	Records and documentation give information on maintenance arrangements. See Clause 40
✓	Name and telephone number of any third party responsible for maintenance prominently displayed at main CIE	✓	User records faults or damage in log book
		✓	User arranges for repairs to be carried out as soon as possible

15 OVER A 12 MONTH PERIOD - SCHEDULE OF ITEMS INSPECTED

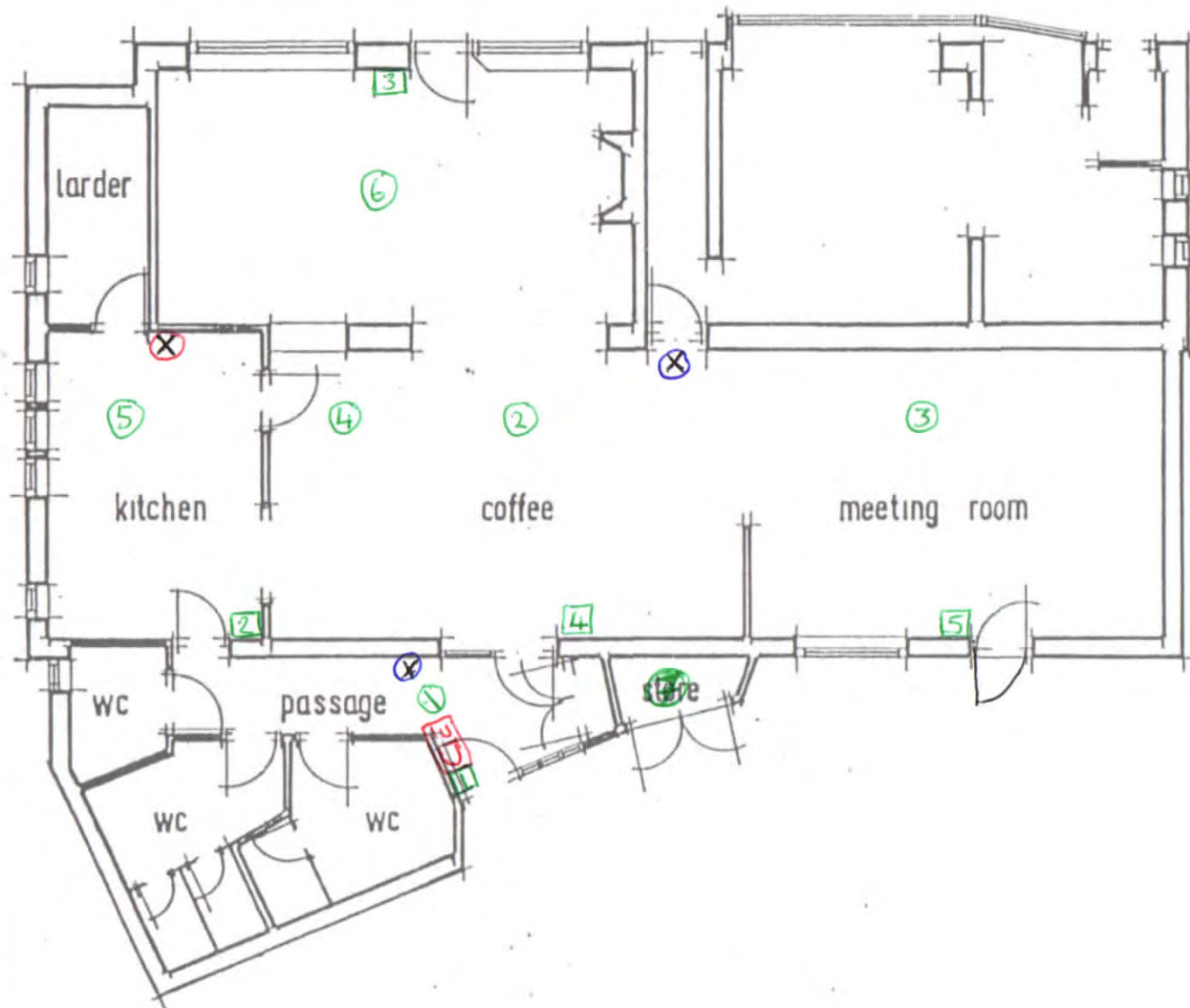
Premises			
✓	Automatic fire detectors unpainted	N/A	Readily-accessible cable fixings secure
✓	Automatic fire detectors undamaged	N/A	Readily-accessible cable fixings undamaged
N/A	Visual fire alarm devices not obstructed	Documentation	
N/A	Lenses of visual fire alarm devices are clean	✓	Cause and effect programme confirmed as being correct

16 OVER A 12 MONTH PERIOD - SCHEDULE OF ITEMS TESTED

✓	Switch mechanism of every manual call point	✓	CIE manufacturer's annual checks and tests carried out
✓	Fire alarm devices checked for correct operation	N/A	Radio signal strengths checked for adequacy
✓	Automatic fire detectors functionally tested, including heat detectors, point smoke detectors, optical beam smoke detectors, aspirating fire detection systems, carbon monoxide fire detectors, flame detectors and multi-sensor detectors	N/A	For fire detection systems that enable analogue values to be determined it should be confirmed that each analogue value is within the range specified by the manufacturer
N/A	All unmonitored, permanently-illuminated filament lamp indicators at CIE replaced	✓	Standby power supply capacity checked
		✓	Checks recommended by manufacturers of other components of system carried out

17 ADDITIONAL CHECKS UPON CHANGE OF SERVICING ORGANISATION

N/A	Adequate number of call points (Clause 20.2)	N/A	Standby power supplied provided
N/A	Adequate provision of fire detection for the category of system	N/A	Standby power supplies comply with Clause 25.4
N/A	Sound pressure levels comply with Clause 16.2	N/A	Exposure to false alarms is not excessive (see Section 3)
N/A	Changes in use, layout or construction of the premises have not reduced system effectiveness	N/A	Experience to false alarms is not excessive (see Section 3)
N/A	Cabling has fire resistance complying with Clause 26.2	N/A	Existing records checked
N/A	Circuits monitored in compliance with Clause 12.2	N/A	Log book available. (If not available, a suitable log book should be provided by the servicing organisation). (See Clause 48.2)
N/A	Requirements of BS 7671 are met (Clause 29)		



BELL 1 ⊗
 BELL 2 ⊗
 ZONE 1






COFFEE BAR



Fire Detector Test Schedule

Test Date 17/04/2019
 Panel Menvier MF9200
 Battery Date 24/10/2018
 Battery Type x2 12V 2.8Ah

Coffee Bar

ID	Make	Model	Type	Zone	Location	Date	Test	Warn	Cable	Sealed	Obstruct	Position	EOL	Notes
1	Menvier	MPD620	Photo/Smoke	1	Entrance	X	Y	Y	T&E	N	N	Y	N	
2	Menvier	MHD630	Heat - 60	1	Main Area	X	Y	Y	T&E	N	N	N	N	Not Within 150mm Apex
3	Menvier	MHD630	Heat - 60	1	Main Area	X	Y	Y	T&E	N	N	N	N	Not Within 150mm Apex
4	Menvier	MHD630	Heat - 60	1	Behind Counter	X	Y	Y	T&E	N	N	N	N	Not Within 150mm Apex/Within 200mm Light
5	Menvier	MHD630	Heat - 60	1	Kitchen	X		Y	T&E	N	N	N	N	Not Within 150mm Apex
6	Menvier	MHD630	Heat - 60	1	Main Area	X		Y	T&E	N	N	N	N	Not In Apex/Coverage Not Sufficient
7	Menvier	MHD630	Heat - 60	1	Outside Store	X		Y	T&E	N	Y	Y	N	Within 500mm Shelf + 200mm Light
CP1			Manual Call Point	1	Entrance	N/A		N/A	T&E	N/A	N	Y	N	
CP2			Manual Call Point	1	Kitchen	N/A		N/A	T&E	N/A	N	Y	N	
CP3			Manual Call Point	1	Far Side Exit	N/A	Y	N/A	T&E	N/A	Y	Y	N	Coat Stand Obstructing
CP4			Manual Call Point	1	Near Side Exit	N/A	Y	N/A	T&E	N/A	N	N	Y	Wrong Side of Door
CP5			Manual Call Point	1	Near Side Exit	N/A	Y	N/A	T&E	N/A	N	N	N	Wrong Side of Door + Not Within 1.2-1.4M
Bell 1	Mixed		6" Bell	1	See Plans	N/A	Y		FP	N/A	N	Y	Y	EOL Main Area
Bell 2	Gent	Chloride	6" Bell	2	See Plans	N/A	Y		FP	N/A	N	Y	Y	EOL ?
Doors	N/A													

ONLY PART OF COFFEE BAR COVERED BY THIS ALARM - NEW BUILDING ON ANOTHER SYSTEM