

Certificate Reference: 10938450

1 DETAILS OF THE CLIENT

Client: XXX

Address: XXX

2 DETAILS OF THE EMERGENCY LIGHTING INSTALLATION

Installation Address: Press, XXX

Extent of the emergency lighting installation covered by this certificate: Emergency Lighting Only. One Hour Drain Down Only As Agreed With CVT H&S Advisor To Limit Risks Associated With Full Drain Down.

3 DETAILS OF DEVIATIONS FROM THE CURRENT STANDARDS

Clause number	Details of Deviations
4.2	No Plans Available
Clause 11	No Design Available
10.6; 10.7; Clause 11	No Instructions + Log Book Showing Satisfactory Commissioning Test Available
10.6	No Instructions For Operation + Maintenance
5.2.5; 5.2.6	Inadequate Illumination On Escape Routes + Open Areas
5.3.3	Not All Safety Signs Illuminated
8.3.3	No Testing Facilities For All Luminaires - However Self Test
5.2.8.1	Not All Points of Emphasis Covered

4 RELATED REFERENCE DOCUMENTS

Related reference documents and certificate numbers:
EPM5C/3991244 - 11/05/18


5 NEXT INSPECTION

We RECOMMEND that this installation is further inspected and tested after an interval of not more than: **12 Months**

Interval in accordance with Clause 7.2 of BS EN 50172: 2004 / BS 5266-8: 2004

6 CERTIFICATION OF THE INSPECTION AND TESTING

I/we hereby certify that the emergency lighting system installation at the above premises has been inspected and tested by me/us in accordance with the results of the items inspected and tested on page 2, and to the best of my/our knowledge and belief, the installation complies at the time of my/our inspection and testing with the appropriate recommendations and requirements given in BS 5266-1: 2016 Emergency lighting Part 1: Code of practice for the emergency lighting of premises, BS 1838: 2013 Lighting applications - Emergency lighting and BS EN 50172: 2004 / BS 5266-8: 2004 Emergency escape lighting systems, except for the deviations recorded.

Name: Jason Taylor Position: Qualified Supervisor Signature:  Date: 18/04/2019

7 DETAILS OF THE ELECTRICAL CONTRACTOR


Trading Title: Taylor Electrical Contractors of Yarm LTD

Address: 12 Harker Close
Yarm

Registration Number (if applicable): 041686

Telephone Number: 07967470934

Postcode: TS15 9TT



8 PURPOSE OF INSTALLED EMERGENCY LIGHTING SYSTEM			
✓	Emergency escape lighting	N/A	Standby lighting
✓	Emergency safety lighting	N/A	Partial standby lighting
✓	Open area lighting	N/A	High risk task area lighting

9 EMERGENCY LIGHTING INSTALLATION ARRANGEMENT			
✓	Self-contained emergency luminaire	N/A	Combined emergency luminaire
N/A	Central battery system	N/A	Standby generator system

10 CATEGORIES OF OPERATION FOR EMERGENCY LIGHTING SYSTEM			
Type	Mode	Facilities	Duration
X - Self Contained	0 - Non-maintained	A - Including test device	180 - 3 Hour
X - Self Contained	1 - Maintained	A - Including test device	180 - 3 Hour

11 RESULTS OF INSPECTION AND TESTING		
BS 5266-1:2016 clause reference	Requirements	System Conforms
4.2	Plans are available and correct	No
5.2.5; 5.2.6	Adequate illumination is provided under test conditions, for safe movement on escape routes and open areas (This can be checked by visual inspection and checking that the illumination from the luminaires is not obscured and that minimum design spacings have been met)	No
4.2; 5.2.8	Luminaires correctly positioned and oriented as shown on the plans	N/A
11	Original design still valid	N/A
5.3.3	All escape route safety signs and other safety signs, such as fire fighting equipment location signs visible with the normal lighting extinguished	No
5.2.8	Correct application and siting of emergency escape lighting	No
7.4	Luminaires conform to BS EN 60598-2-22	Yes
6.7	Luminaires have an appropriate Ingress Protection rating for their location	Yes
8	Wiring systems comply with the requirements of BS 7671	Yes
8.2	Fire protection of central wiring systems satisfactory (including cable supports)	N/A
8.2.6	Emergency escape lighting circuits correctly segregated from other supplies	N/A
8.2.12	Wiring to emergency lighting supply power sources in a fixed installation, where a specialist plug and socket arrangement is used, is protected against unauthorised interference	N/A
8.3.3	A sufficient number of suitably located test facilities are provided	No
8.3.5	Central power system output voltage range is compatible with the supply voltage range of the luminaires, taking into account supply cable voltage drop	N/A
10.6	Instructions for operation and maintenance are available	No
11	Test records in the log book complete and satisfactory	Yes
10.6; 10.7; 11	Instructions together with a suitable log book showing a satisfactory commissioning test available for use by the building occupier	No
12	Luminaires tested and found to operate for their full rated duration	Yes
12	Luminaires clean and undamaged with lamps in good condition	Yes
10.7; 13	Building occupier and their staff trained on suitable maintenance, testing and operating procedures, or a current maintenance contract is in place	Yes
13.3.2	Evidence of servicing of Central Battery System (in line with manufacturer's procedures); in-house or current maintenance contract is in place	No
13.3.3	Evidence of servicing of Standby Generator System (in line with manufacturer's procedures); in-house or current maintenance contract is in place	No
12	After test, each luminaire charging indicator operates correctly	Yes

12 TEST INSTRUMENTS USED			
Instrument 1 (Light Meter) Model:	Serial Number:	Instrument 2 (If Any) Model:	Serial Number:
N/A	N/A	N/A	N/A

CONTINUATION FOR GENERAL COMMENTS

GENERAL COMMENTS

General Comments for the Installation or Inspection of the report:

Additional Luminaires Are Required In A Variety Of Positions For Installation To Meet Requirements of BS5266-1. One Hour Drain Down Only As Agreed With H&S Advisor, To Limit Risks Associated With A Full Drain Down. Spacing Tables Used To Determine Illumination.

We Recommend The Following:

Relevant documentation obtained (Previous Reports, plans etc.)

Additional Luminaires Installed At;

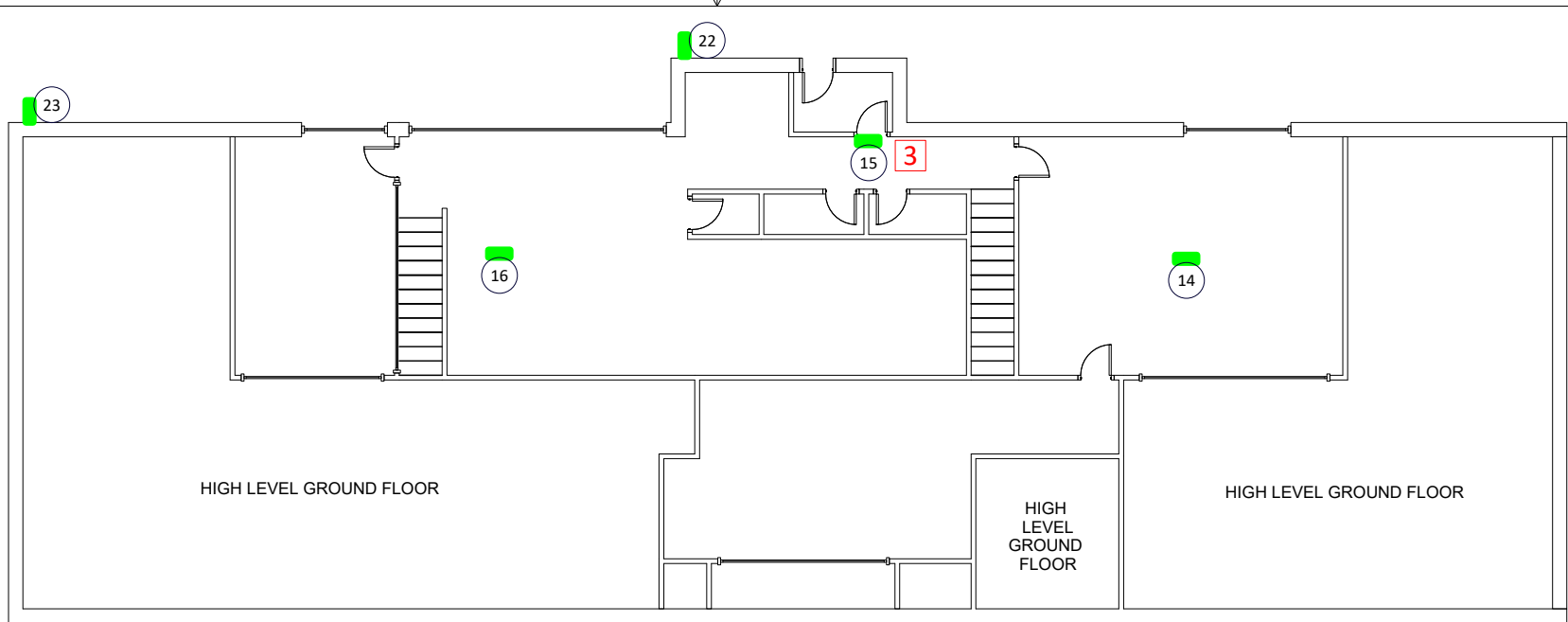
DB Room

WC If Deemed Used By Disabled

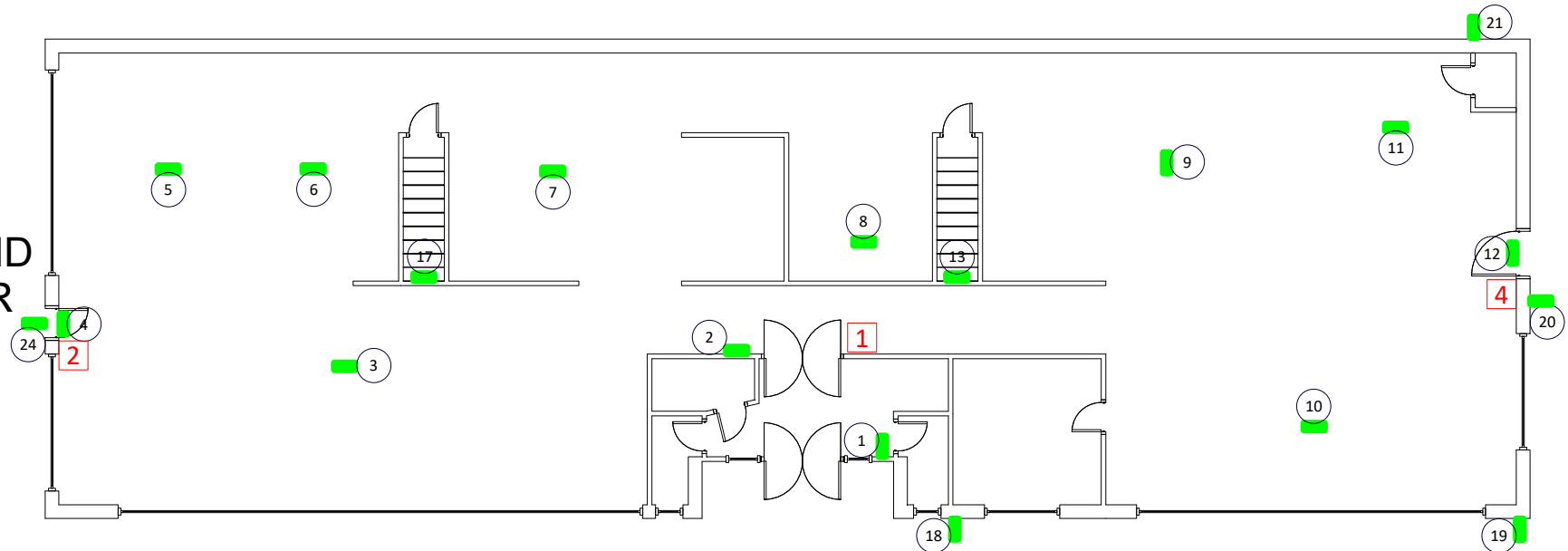
External Main Steps

This Is NOT An Exhaustive List And We Recommend A New Design Be Obtained

FIRST FLOOR



GROUND FLOOR



TITLE PRESS EM LGT A4 PLANS			
SIZE A	BY JT	DWG NO	REV
SCALE NOT TO SCALE	SHEET		



Emergency Lighting Test Schedule

18/04/2019

Press

ID	Make	Model	Wattage	Code	Location	Battery Installed	Glow	Clean	Operating	Key	Local Circuit	Charge LGT
EM1	Ansell	ACELED/3M/ST	7	X1A180	Boot Rm Exit	May-16	Y	Y	Y	N	Y	Y
EM2	Ansell	ACELED/3M/ST	7	X1A180	Hallway Exit	May-16	Y	Y	Y	N	Y	Y
EM3	Ansell	ACELED/3M/ST	7	X0A180	Print Area	Jan-18	Y	Y	Y	N	Y	Y
EM4	Ansell	ACELED/3M/ST	7	X0A180	Print Area Exit	May-16	Y	Y	Y	N	Y	Y
EM5	Ansell	ACELED/3M/ST	7	X0A180	Print Area	May-16	Y	Y	Y	N	Y	Y
EM6	Ansell	ACELED/3M/ST	7	X0A180	Print Area	May-16	Y	Y	Y	N	Y	Y
EM7	Ansell	ACELED/3M/ST	7	X0A180	GF Storage	May-16	Y	Y	Y	N	Y	Y
EM8	Ansell	ACELED/3M/ST	7	X0A180	GF Storage	May-16	Y	Y	Y	N	Y	Y
EM9	Ansell	ACELED/3M/ST	7	X0A180	GF Storage	May-16	Y	Y	Y	N	Y	Y
EM10	Ansell	ACELED/3M/ST	7	X0A180	Pack Area	May-16	Y	Y	Y	N	Y	Y
EM11	Ansell	ACELED/3M/ST	7	X0A180	Pack Area Exit	May-18	Y	Y	Y	N	Y	Y
EM12	Ansell	ACELED/3M/ST	7	X0A180	Pack Area	May-16	Y	Y	Y	N	Y	Y
EM13	Ansell	ACELED/3M/ST	7	X0A180	Pack Area Stairs	May-16	Y	Y	Y	N	Y	Y
EM14	Ansell	ACELED/3M/ST	7	X0A180	1st Fl Storage	May-16	Y	Y	Y	N	Y	Y
EM15	Ansell	ACELED/3M/ST	7	X0A180	1st Fl Exit	May-16	Y	Y	Y	N	Y	Y
EM16	Ansell	ACELED/3M/ST	7	X0A180	1st Fl Open Area	May-16	Y	Y	Y	N	Y	Y
EM17	Ansell	ACELED/3M/ST	7	X0A180	Print Area Stairs	May-16	Y	Y	Y	N	Y	Y
EM18	Ansell	ACELED/3M/ST	7	X0A180	Outside	May-16	Y	Y	Y	N	Y	Y
EM19	Ansell	ACELED/3M/ST	7	X0A180	Outside	May-16	Y	Y	Y	N	Y	Y
EM20	Ansell	ACELED/3M/ST	7	X1A180	Outside	May-16	Y	Y	Y	N	Y	Y
EM21	Ansell	ACELED/3M/ST	7	X1A180	Outside	May-16	Y	Y	Y	N	Y	Y
EM22	Ansell	ACELED/3M/ST	7	X1A180	Outside	May-16	Y	Y	Y	N	Y	Y
EM23	Ansell	ACELED/3M/ST	7	X1A180	Outside	Mar-18	Y	Y	Y	N	Y	Y
EM24	Ansell	ACELED/3M/ST	7	X1A180	Outside	Mar-18	Y	Y	Y	N	Y	Y